

Integrated Impact Assessment Summary Report

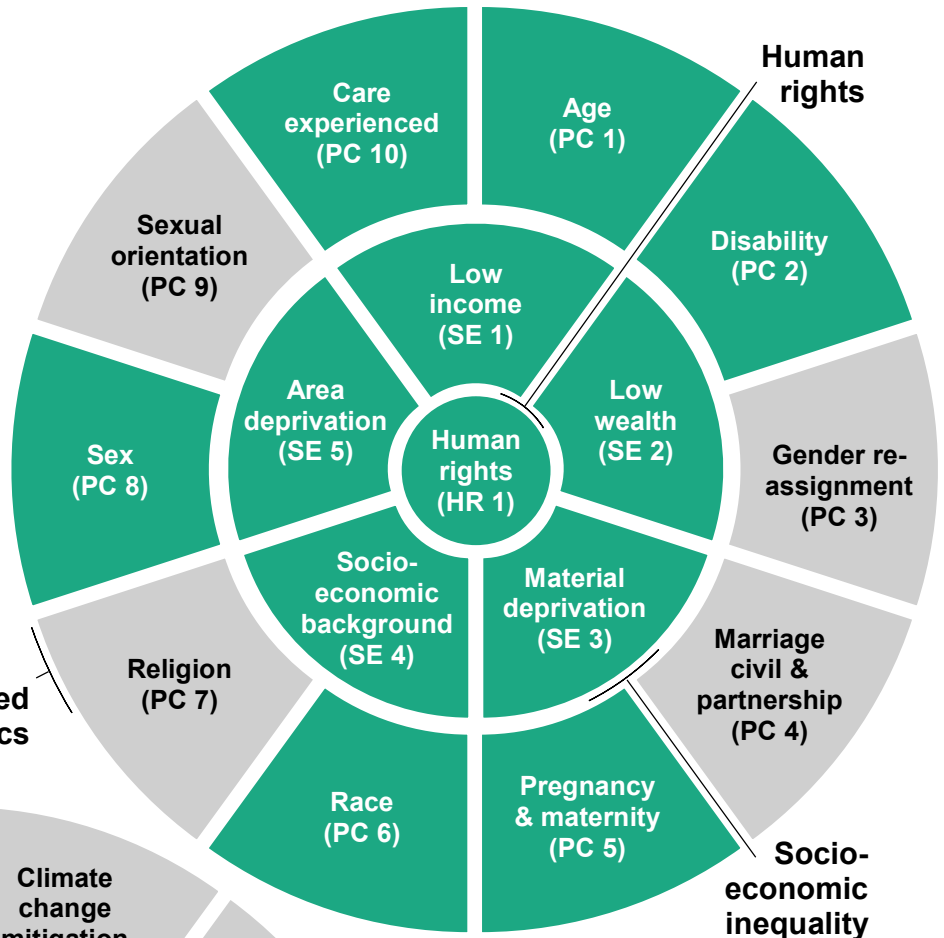
Child Poverty Strategy 2024-2029



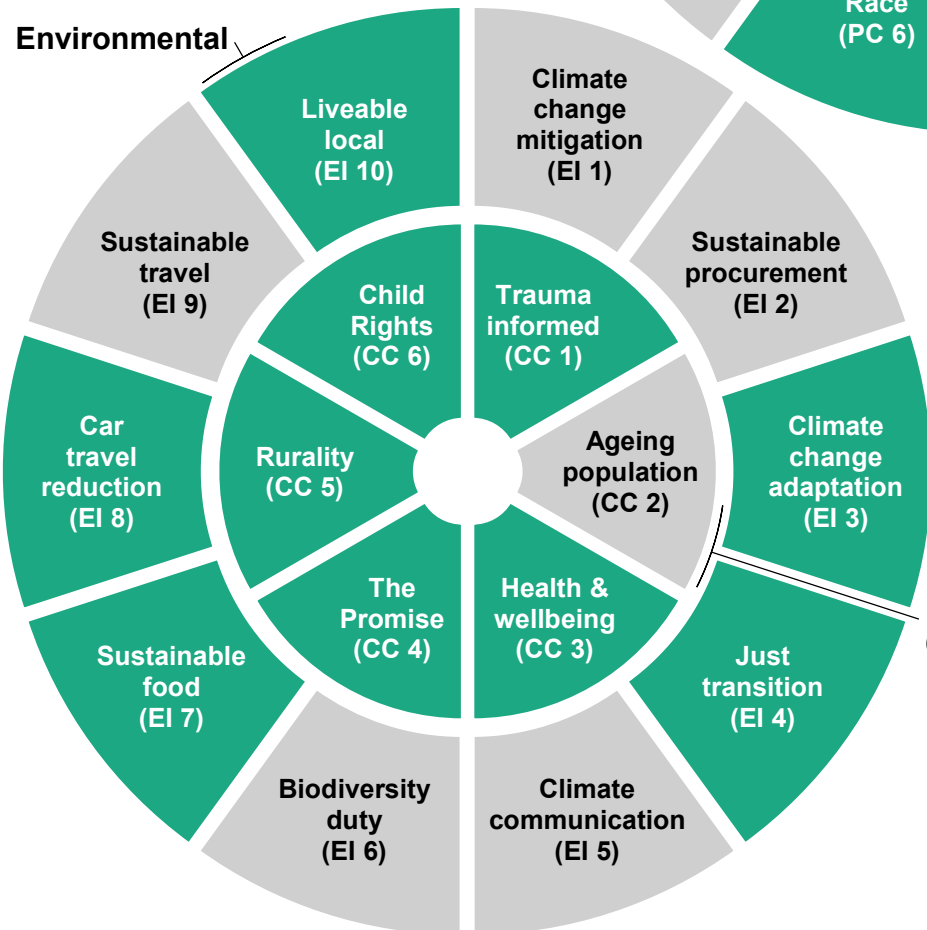
Completed by:

Elizabeth Dougall,
Senior Policy Officer Community
Planning & Equalities,
Performance, Policy &
Community Planning

Date started: 26/04/23



Protected characteristics



Environmental

Cross-Cutting

To be implemented on:

#REF!

Review date:

18/04/24

Oversight Panel:

Financial Inclusion and
Growth Strategic Delivery
Partnership

- negative impact
- no impact / not applicable
- positive impact

Public sector equality duty

Eliminating unlawful discrimination, harassment, and victimisation?

The new Child Poverty Strategy seeks to mainstream equalities in it's over arching outcomes and will ensure that any subsequent action points to not disproportionately disadvantage one community or group over another. South Ayrshire CPP is committed to eliminating discrimination and stigmatization and the structure which has been put in place will play a positive role in the contribution towards this vision, supporting our communities and citizens to grow, care and live a better life in South Ayrshire.

Advancing equality of opportunity?

The new Child Poverty Strategy is inclusive of everyone and ensure equality of opportunity to improve outcomes. In addition, the CPP has identified key areas of focus within the LOIP taking into consideration children and young people (in particular those with caring responsibilities and those who are care experienced/care leavers) and our ageing population. Poverty is a key area of focus. The CPPs seek to encourage and improve participation through our Community Planning Participation and Engagement Group which represents 'communities of interest' across South Ayrshire. Locality Planning is community led and driven and action plans will be determined by communities needs and understanding of their communities.

Fostering good relations?

The new Child Poverty Strategy is inclusive of everyone and ensure equality of opportunity to improve outcomes. In addition, the CPP has identified key areas of focus within the LOIP taking into consideration children and young people (in particular those with caring responsibilities and those who are care experienced/care leavers) and our ageing population. Poverty is a key area of focus. The CPP seeks to encourage and improve participation through our Community Planning Participation and Engagement Group which represents 'communities of interest' across South Ayrshire.

Impact code key

PC EQUALITIES: impact on protected characteristics

SE EQUALITIES: impact on socio-economic inequality

HR EQUALITIES: impact on human rights

EI ENVIRONMENTAL IMPACTS

CC CROSS-CUTTING IMPACTS

Does this proposal require a Child Rights and Wellbeing Impact Assessment (CRWIA)? **yes**

Please turn over for CRWIA detail.

Child Rights & Wellbeing Impact Assessment (CRWIA) summary

CRWIA for a non-legislative policy/measure

CRWIA title:

South Ayrshire Community Planning Partnership Child Poverty Strategy 2024-2029

Publication date:

18/04/24

Summary of policy aims and desired outcomes

The plan will focus on key drivers that impact on child poverty that have been stated within the acts delivery plan.

Executive summary

In April 23 the CPP approved work to take place to develop a new child poverty strategy for South Ayrshire, aligned to the national plan.

Background:

The new national delivery plan and changing strategic landscape presented an opportunity for South Ayrshire to refresh and realign our child poverty action plan to better reflect national and local circumstances.

Scope of the CRWIA, identifying the children and young people affected by the policy, and summarising the evidence base:

The SG identified 6 Priority family types as being at high risk of child poverty: Lone parent, Minority ethnic, Families with a disabled adult or child, Families with a younger mother (under 25, Families with a child under one, Larger families (three or more children).

Children and young people's views and experiences:

Initial lived experience workshops were held with parents/carers to capture feedback on interaction with services. As action plans develop we will extend engagement to capture views with children & young people.

Key Findings, including an assessment of the impact on children's rights, and how the measure will contribute to children's wellbeing:

The overall Child Poverty Strategy aims to improve outcomes and inequalities of children & young people.

Monitoring and review:

Annual Progress Report as part of statutory requirements as well as reporting to the Financial Inclusion & Growth SDP.

CRWIA Declaration Authorisation

Policy lead:

Elizabeth Dougall, Senior Policy Officer Community Planning & Equalities

Date:

12/04/24

Deputy Director or Equivalent:

Lyndsay McRoberts, Depute Chief Executive and Director of Education
