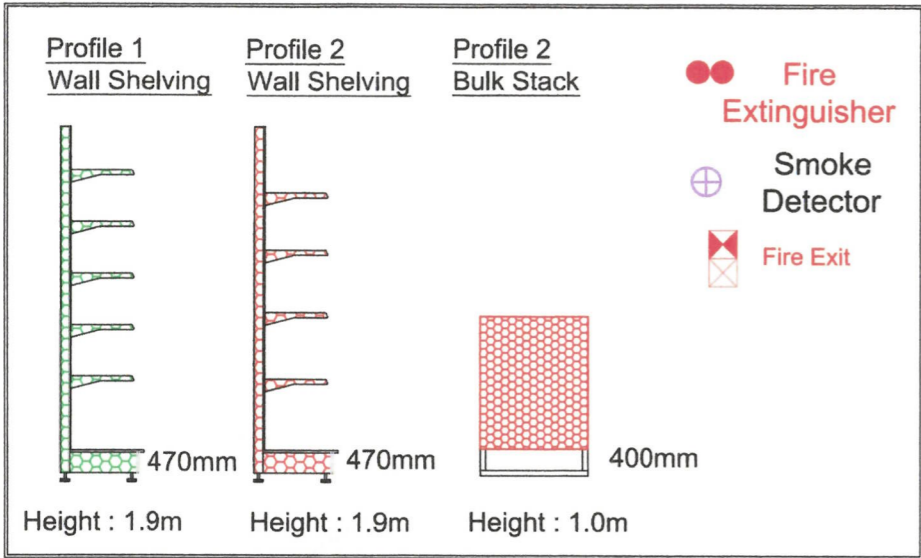


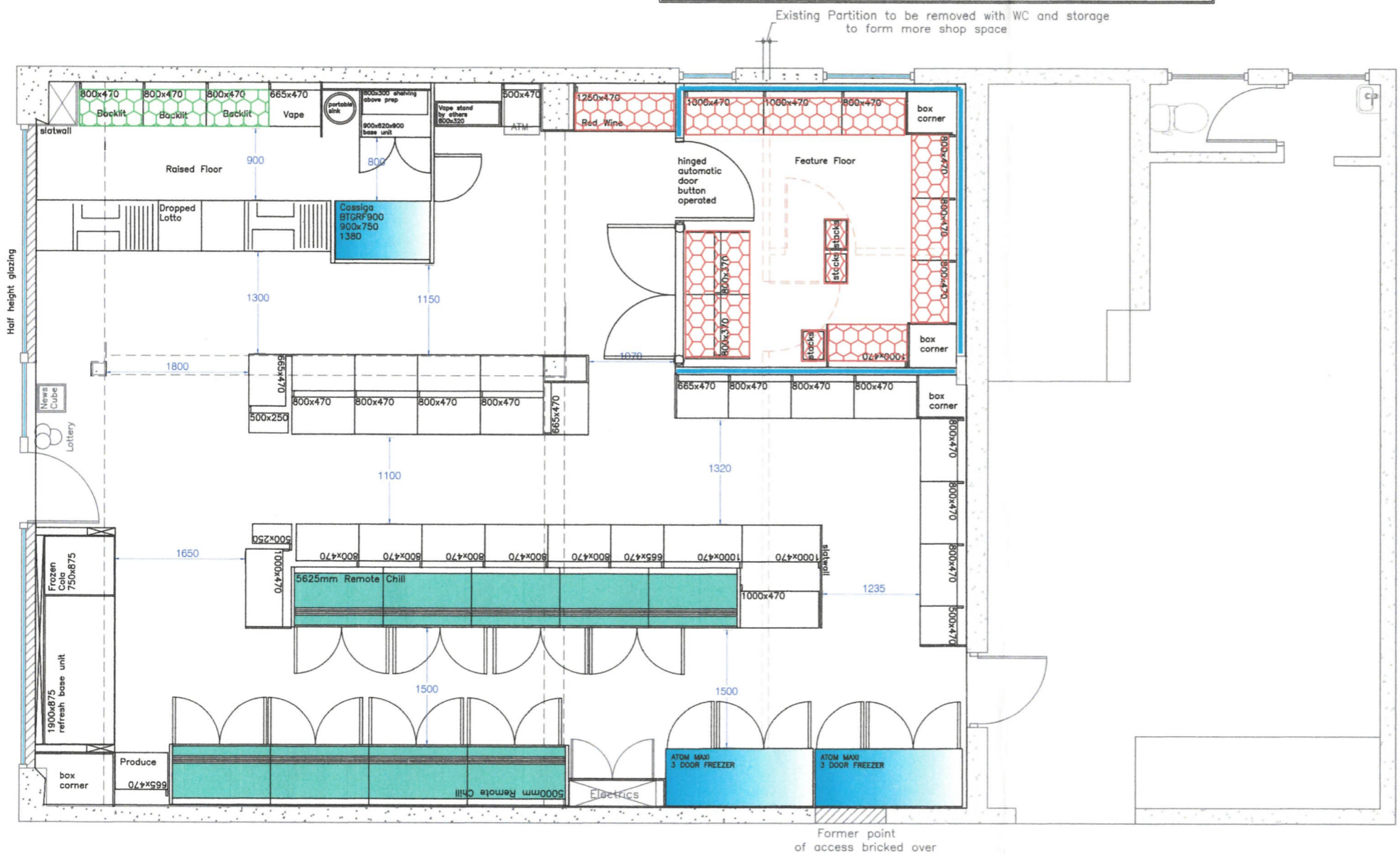
**Application for Variation of Premises Licence**

1.	Campbell Retailers Ltd  Braefoot Stores 1-2 Braefoot Annbank
Extending the shop and installing a "Beer Cave". Increasing floor space and position in the store	



Display Area of Alcohol (Inaccessible)  
 Display Area of Alcohol (Accessible)

Total Display Area of Alcohol (Inaccessible)  
 Spirits Shelving:- = 2.4m(w) x 1.9m(h) = 4.56m<sup>2</sup>  
 Chilled Secure Room Shelving:- 10.65m(w) x 1.9m(h) = 20.235m<sup>2</sup>  
 Bulk Stacks - 1.2m (w) x 1.0m (h) = 1.2m<sup>2</sup>  
 Total Display Shelving -  
 Total = 25.995m<sup>2</sup>  
 Footprint -  
 Retail Footprint is 109sqm.  
 Licensed Shelving Footprint 6.6975sqm  
 6.144% of the total retail Space



Existing Ceiling:	-
Proposed Ceiling:	-
Depth Of Frieze:	-
Wall Column Height:	-
Gondola Column Height:	-
Suspended Ceiling:	-
Floor Specification:	-
Lighting Specification:	-
Woodwork Finish:	-
Shelving Colour:	-
Kickplate Colour:	-
Ticket Rail Colour:	-
Dairy Trim Colour:	-
Slatwall Finish:	-
Frieze Finish:	-



Vertex R.A.S. Ltd  
 Sir William Smith Road  
 Kirkton Industrial Estate  
 Arbroath  
 Angus  
 DD11 3RD

Tele: 01241 876796  
 F.A.X.: 01241 878010  
 www.vertexscotland.com

Project Details:	Premier Annbank 1-2 Braefoot Annbank
	KA6 5EH

Drawing Title:	License Plan
Drawing No:	21-014
Scale:	Revision: A
Date:	24.01.24 Project Rep: JM
Drawn By:	AA Revision By:

All Plans and quotations remain the property of the designer, who retain the copyright.  
 Drawings are based upon site information supplied by third parties and as such their accuracy cannot be guaranteed.  
 All features are approximate and subject to clarification.  
 Therefore, no shop plan or shelving elevation example, may be copied or used as a basis for quotation by other persons or companies, without written permission from the proprietor of the company  
**DO NOT SCALE**