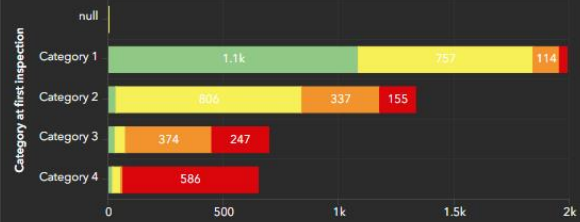


Ash Dieback Survey

Select a category
All Categories

Category change on re-inspection

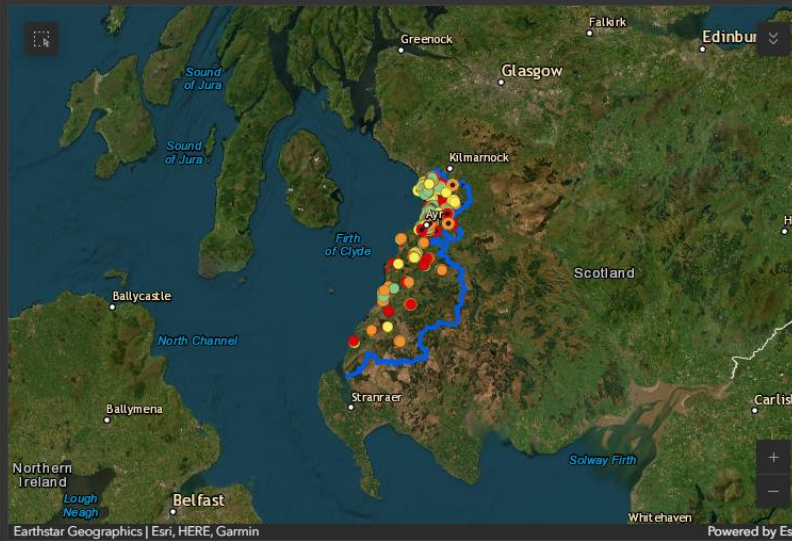


Ash Trees Surveyed: 7,407

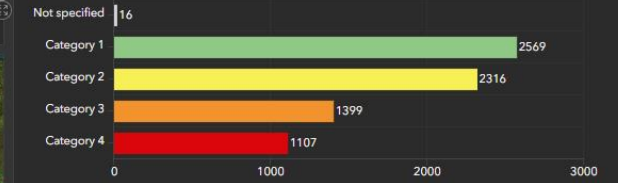
2320 of 2401 GM sites (96.63%)

Number of Ash Trees Removed: 1721 (23.23%)

Crown reduced or shaped, or pollarded: 12 (0.16%)

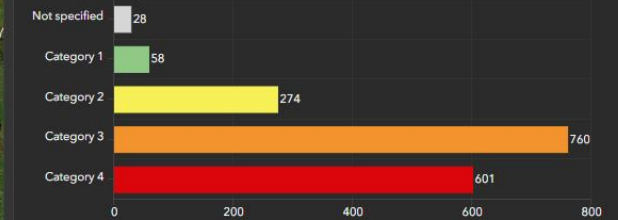


Category on first inspection

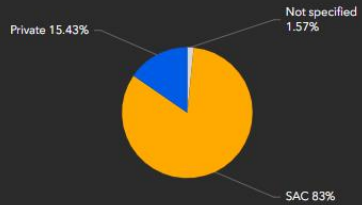


Serial chart Pie chart

Category on removal



Ownership Breakdown (%)



Date	G Code (if available)	Location/Address	Height of Tree/s (m)	Canopy Category	Ease of Access	Land/Tree Ownership	
19/08/2022, 13:44	G10057	Cambusdoon	7.00	Category 4	Good access	SAC	Tree overhanging busy pathway, tree next to River
19/08/2022, 14:21	G10057	Cambusdoon	12.00	Category 3	Restricted access due to neighbouring trees	SAC	Tree next to footpath
14/08/2024, 13:32	G10057	Cambusdoon	17.00	Category 4	Ok	SAC	Overhanging path

All Removed Removed 6 April 23 - 5 April 24 Removed 6 April 24 - 5 April 25 Crown reduced/shaped or pollarded 6/4/24 - 5/4/25

ASH DIEBACK DASHBOARD