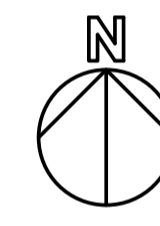
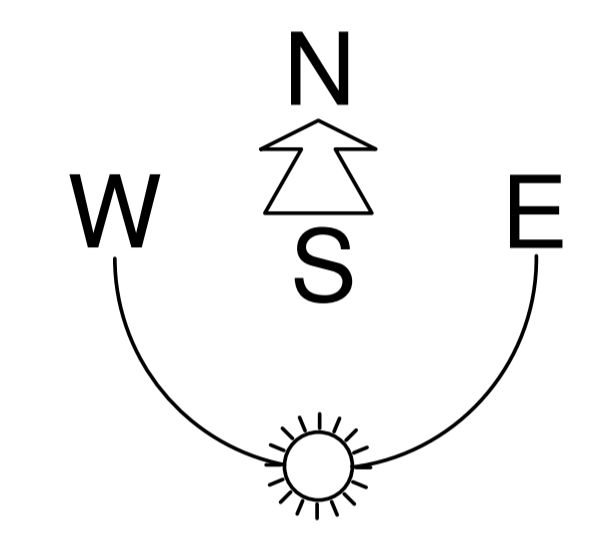
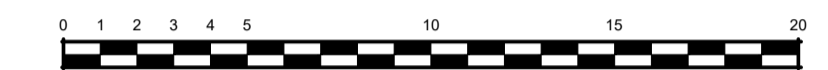


This drawing is the property of Portakabin Limited. It must not be copied or reproduced or divulged to anyone without written permission.

Do not scale off this drawing. All discrepancies to be reported to Portakabin Limited.

Rev	Date Approved	Description	Checked	Reviewed	Approved
A	26/02/21	Building internal layout shown	AMV	GK	
B	09/03/21	Parking and roundabout moved away from neighbouring houses	AMV	GK	
C	09/03/21	Bus stops moved, new & existing trees noted. Roundabout reduced in size. Bin store moved. Bus stops and roundabout repositioned to approved' location, with car parking moved to accommodate. Approved' proposed trees noted.	AMV	GK	
D	11/03/21		AMV	GK	
E	19/03/21	Reception partition moved to avoid window line.	AMV	GK	
F	06/04/21	External play area revised to for level changes	AMV	GK	



- Grass seed
- Meadow Turf
- Artificial grass
- Planted bank
- Resin Bound Dark
- Resin Bound Light
- Rubber Mulch
- Concrete Base
- Asphalt - Path
- Asphalt - Road

## Portakabin

Portakabin (Scotland) Limited  
Whistleberry Road Hamilton ML3 0EJ  
+44 (0)1698 713320  
[portakabin.co.uk](http://portakabin.co.uk)

Status: S0	Purpose Of Issue: Preliminary
------------	-------------------------------

Client: South Ayrshire Council  
Project: Struthers Nursery

Title: Re-orientated Site Plan

Drawn & Checked	Reviewed	Approved
AMV 25/02/21	GK 25/02/21	

Scale @ A1: 1:500

Portakabin Number: 435003226	Client Reference:
------------------------------	-------------------

Project	Originator	Zone	Level	Type	Role	Number	Rev
PKS	XX	SP	DR	A	405	F	

