

BEES IDENTIFICATION

Honey Bees

Honey bees are small and vary in colour from golden brown to almost black. They have large hairy eyes, a furry chest or thorax and distinctive bent antennae.



During the warmer months honey bees may collect on your garden shrubs or in some instances on your property. Usually they will not stay for longer than a few days and if left alone, will remain harmless. We can provide contact details of a local beekeeper who may capture and safely remove them.

Bumble bees, masonry bees and solitary bees

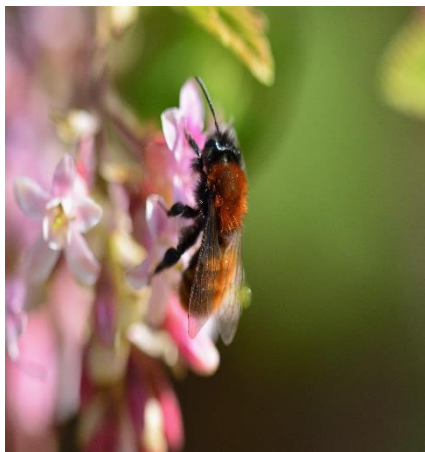
Generally these bees are instantly recognisable and are found in very small numbers, often flying in and out of a small entrance hole in the ground or sometimes brickwork of your house.

Bumble bees and masonry bees will never attack you if left alone and normally do not present any serious risk to health.

In some rare situations it may be necessary to destroy the bees. Our Pest Control Officer will offer advice and only in exceptional and unavoidable circumstances may offer treatment to destroy the bees. Please note that there will be a charge for this service



Bumble Bee



Solitary Bee



Masonry Bee