

South Ayrshire Council

Report by Director of Strategic Change and Communities
to Cabinet
of 20 June 2023

Subject: Community Planning Update

1. Purpose

- 1.1 The purpose of this report is to seek Cabinet endorsement for the Community Planning Partnership's agreed move to a locality-based model of collaboration and notes the alignment with other key Community Planning Partners.

2. Recommendation

2.1 It is recommended that the Cabinet:

- 2.1.1 endorses the proposed approach to locality planning for South Ayrshire identified in paragraphs 4.3 to 4.6 of the report; and**
- 2.1.2 agrees the development of a new local outcomes improvement plan by the Community Planning Partnership for approval in March 2024.**

3. Background

- 3.1 The Community Empowerment (Scotland) Act 2015 states that Community Planning Partnerships (CPP) must:

- Prepare and publish a **Local Outcomes Improvement Plan (LOIP)** which sets out the local outcomes which the CPP will prioritise for improvement;
- Identify smaller areas within the local authority area which experience the poorest outcomes, and prepare and publish **Locality Plans** to improve outcomes on agreed priorities for these communities (the outcomes prioritised for improvement in a locality plan may differ from those in the local outcomes improvement plan); and
- Review and report publicly on progress towards their LOIP and locality plans and keep the continued suitability of these plans under review.

- 3.2 The LOIP and associated annual updates are available here. As a CPP, our locality work focused on our 'team around the community' pilot in Wallacetown. This was supported by the creation of a Wallacetown Strategic Delivery Partnership (SDP). The SDP's role was to help provide strategic direction and coordination of a joined-up service delivery model that drew on the skills of a range of partner agencies to deliver better outcomes in our most deprived neighborhood.

- 3.3 The pilot encouraged partners to reflect on their service delivery and identify areas where collaboration would provide additionality and reduce unnecessary overlap. Detailed consultation was undertaken with residents during a 'street week' event where representatives of Community Planning partners engaged with over 400 residents to discuss their priorities for the area such as crime and upkeep of the area. These priorities then formed part of the SDP's actions with regular updates provided to the CP Board.
- 3.4 Learning from this pilot led the SDP Chair's Executive to consider how localities can be used as a tool to increase opportunities for collaboration on local issues while still having a strategic overview of population wide priorities.
- 3.5 Alongside this process, the Health and Social Care Partnership (HSCP) used their experience in Wallacetown to align their Adult Services operational delivery model to six localities. Each locality has a manager and a team of HSCP related practitioners to deliver services based on local need. Existing Locality Planning Partnerships will play an enhanced role in setting local priorities based on data and consultation with these communities .
- 3.6 In April, the Community Planning Board supported a proposed restructure of Community Planning to help facilitate locality-based collaboration and the development of a new LOIP. Details of the approved paper can be found here.
- 3.7 The Cabinet has responsibility for monitoring and reviewing the achievement of the Community Planning Objectives for the Community Planning Partnership and the preparation of revised or new Community Plans and reviewing locality plans for Area Community Planning

4. Proposals

- 4.1 Working in localities allows the CPP and Council to make informed decisions about their strategic planning and commissioning and to make use of enhanced opportunities to collaborate.
- 4.2 Locality Planning in South Ayrshire will have two main purposes:
- to jointly assess need, prioritise and plan how resources can best be deployed in pursuit of the delivery of improved local outcomes; and,
 - to be the local focus for service delivery and support by organisations from across the sectors to communities.
- 4.3 Officers will develop 6 locality plans, (*initially piloting in Ayr North*) which will be led and monitored by the Locality Planning Partnerships with support from the new HSCP Locality Managers.
- 4.4 The proposed localities are similar to the HSCP's existing locality boundaries and include:
- Ayr North;
 - Ayr South and Villages;
 - Prestwick and Villages;
 - Troon and Villages;

- Maybole and North Carrick; and
- Girvan and South Carrick.

4.5 It is proposed that Community Planning aligns with the locality boundaries identified by the HSCP, including support for the creation of a new Ayr North locality (further information on the changing of the Ayr locality boundaries can be found in the HSCP Strategic Planning Advisory Group [\(SPAG\) paper of 21 February 2023](#)).

4.6 Each of the Locality Plans will be data driven and help inform future place planning initiatives. The plans will be reported to the Community Planning Board on an annual basis.

4.7 In addition to the move to localities, the Community Planning Board agreed to develop a new LOIP. The development process will be led by the SDP's and focus on areas that reflect Council Plan 23-28 priorities. Details of the structure are attached as Appendix 1. The new LOIP will be approved by Community Planning Partners in March 2024.

5. Legal and Procurement Implications

5.1 The recommendations in this report are consistent with legal requirements under Part 2 of the Community Empowerment (Scotland) Act 2015 on each community planning partnership to review from time to time the local outcomes improvement plan and locality plan.

5.2 There are no procurement implications arising from this report.

6. Financial Implications

6.1 Not applicable

7. Human Resources Implications

7.1 Not applicable

8. Risk

8.1 Risk Implications of Adopting the Recommendations

8.1.1 There are no risks associated with adopting the recommendations.

8.2 Risk Implications of Rejecting the Recommendations

8.2.1 The risks associated with rejecting the recommendations are that the Council will not have an agreed PMF in place to monitor performance and improvement.

9. Equalities

9.1 An Equalities impact assessment has been completed by the HSCP on the proposed new localities and can be found in Appendix 2. An Equalities Impact Assessment has been started for the new LOIP and will be regularly updated as the plan develops.

10. Sustainable Development Implications

10.1 This report does not propose or seek approval for a plan, policy, programme or strategy or document otherwise described which could be considered to constitute a plan, programme, policy or strategy.

11. Options Appraisal

11.1 An options appraisal has not been carried out in relation to the subject matter of this report.

12. Link to Council Plan

12.1 As outlined below:

Priority	Outcomes	Indicate each outcome that applies
Spaces and Places	Moving around and the environment.	Yes
	Play, Sport and Recreation	Yes
Live, Work, Learn	Education and lifelong learning	Yes
	Work and economy	Yes
	Housing	Yes
Civic and Community Pride	Pride in South Ayrshire	Yes
	Community Engagement	Yes
Support Services	Efficient and effective enabling services	Yes

13. Results of Consultation

13.1 There has been public consultation on the contents of this report carried out through the existing Locality Planning Groups and all Community Planning Partners.

13.2 Consultation has taken place with Councillor Martin Dowey, Portfolio Holder for Corporate and Strategic, and the contents of this report reflect any feedback provided.

14. Next Steps for Decision Tracking Purposes

14.1 If the recommendations above are approved by Members, the Director of Strategic Change and Communities will ensure that all necessary steps are taken to ensure full implementation of the decision within the following timescales, with the completion status reported to the Cabinet in the 'Council and Cabinet Decision Log' at each of its meetings until such time as the decision is fully implemented:

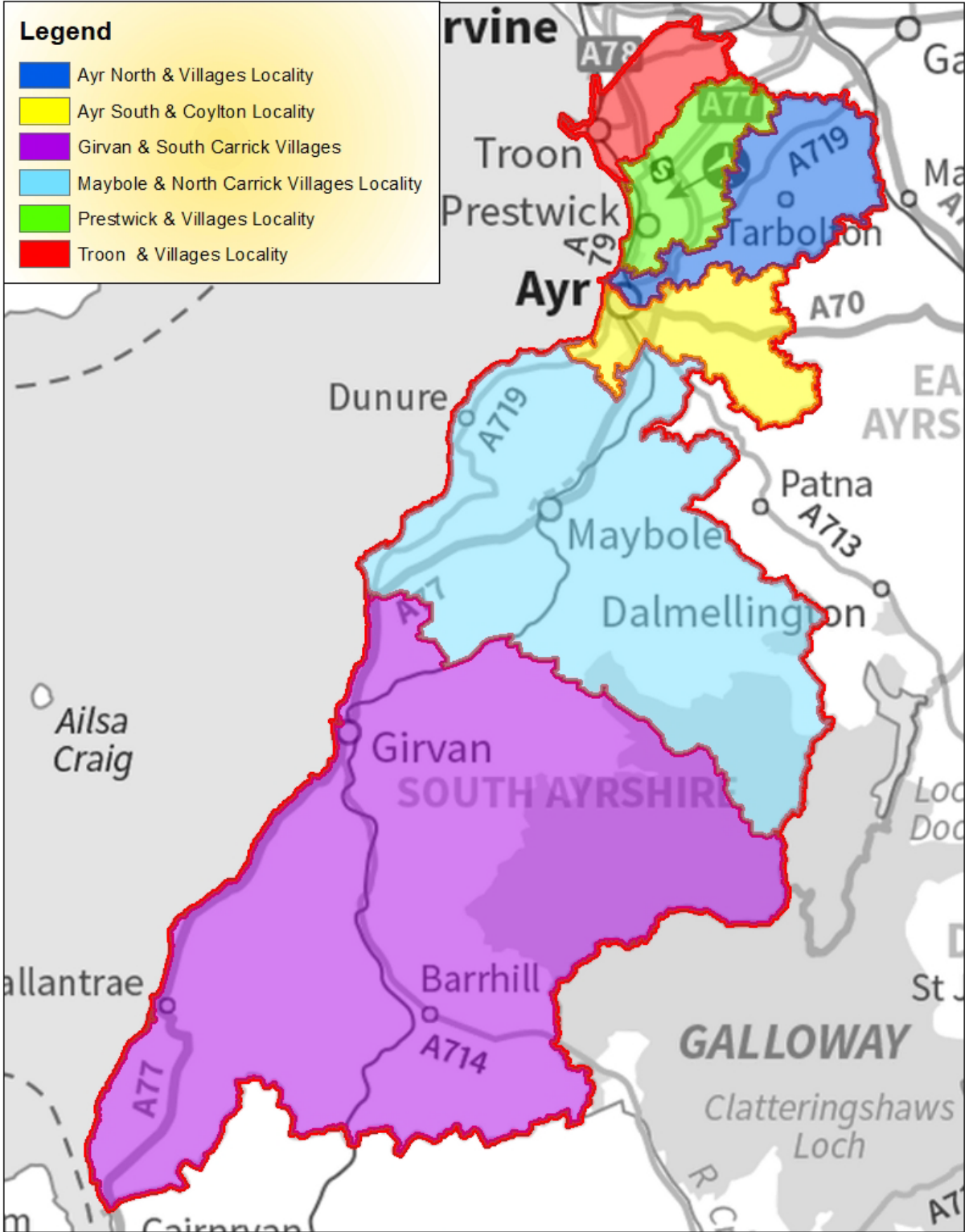
<i>Implementation</i>	<i>Due date</i>	<i>Managed by</i>
Launch Ayr North as pilot locality	31 August 2023	Service Lead – Policy, Performance and Community Planning
Develop LOIP and remaining localities	30 April 2024	Service Lead – Policy, Performance and Community Planning

Background Papers **None**

Person to Contact **Kevin Anderson, Service Lead - Policy, Performance and Community Planning**
County Buildings, Wellington Square, Ayr, KA7 1DR
Phone 01292 612982
E-mail kevin.anderson@south-ayrshire.gov.uk

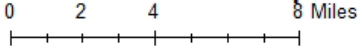
Date: **12 June 2023**

SOUTH AYRSHIRE : LOCALITY MAP



Scale
1:255000

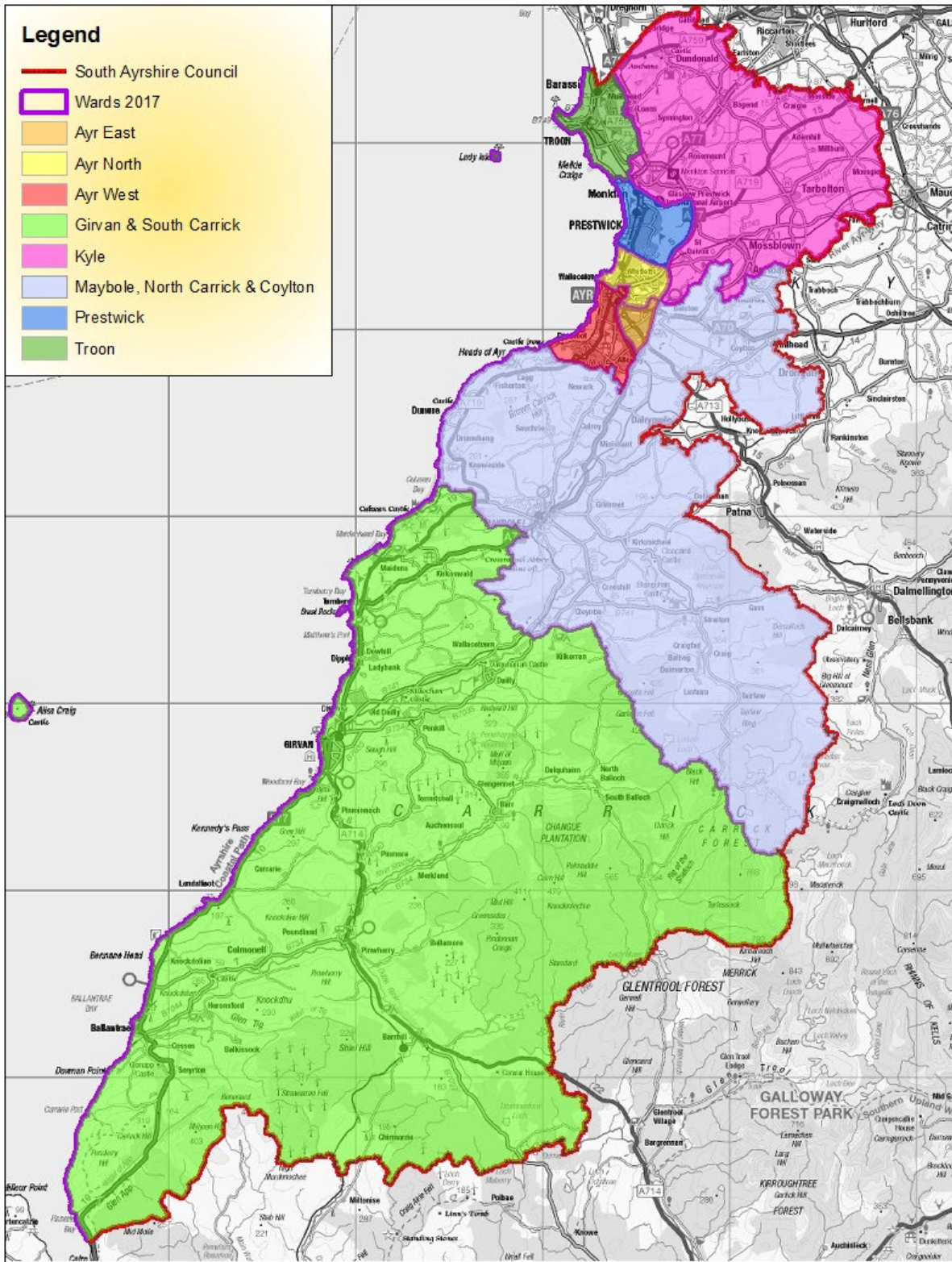
South Ayrshire's six bespoke localities



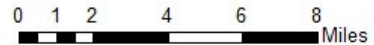
This product includes mapping data licenced from Ordnance Survey with the permission of the Controller of Her Majesty's Stationery Office.
© Crown copyright and/or database right 2022. All rights reserved. Licence number 100020765.



SOUTH AYRSHIRE : COUNCIL WARDS



South Ayrshire Wards



This product includes mapping data licenced from Ordnance Survey with the permission of the Controller of Her Majesty's Stationery Office.
 © Crown copyright and/or database right 2018. All rights reserved. Licence number 100020765.



LOCALITY PLANNING & YOU

Changes to administrative boundaries of Locality Planning Partnerships within
Ayr North & Prestwick

What matters to you?

Locality Planning Partnership administrative boundaries in Ayr North & Prestwick are changing and we want to hear your views, comments, and concerns.

Neil Goudie

neil.goudie@south-ayrshire.gov.uk

Locality Planning boundaries in North Ayr and Villages and Prestwick and Villages are changing. How will it impact on you?

What's the Health & Social Care Partnership?

South Ayrshire HSCP brings together a wide range of community-based health, social care and social work services in South Ayrshire. Services are provided by the HSCP or commissioned by us from another provider.

In South Ayrshire, the HSCP delivers and commissions a broad range of services, meaning the HSCP is in contact with citizens at all stages of life.

What's a Locality Planning Partnership?

In order to make informed decisions about our strategic planning and commissioning, we need to fully understand our community which can be done using a range of population data as well as our own local intelligence.

Locality Planning in South Ayrshire will have two main purposes:

- to jointly assess need, prioritise and plan how all resources, irrespective of their origin, can best be deployed in pursuit of the delivery of the National and Local Outcomes; and,
- to be the local focus for service delivery and support by organisations from across the sectors to the population or communities within the area

What do we want to do?

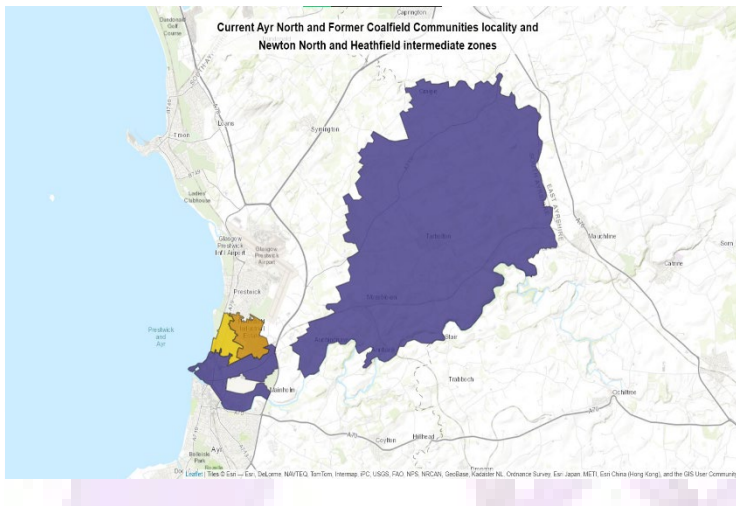
The aim of this consultation exercise is to inform local people of the forthcoming changes to the administrative boundaries that affect both Ayr North and Villages and Prestwick and Villages Locality Planning Partnerships and to collect their views, criticisms, and concerns in respect of these changes.

The proposed change affects the two Ayr and the Prestwick locality areas.

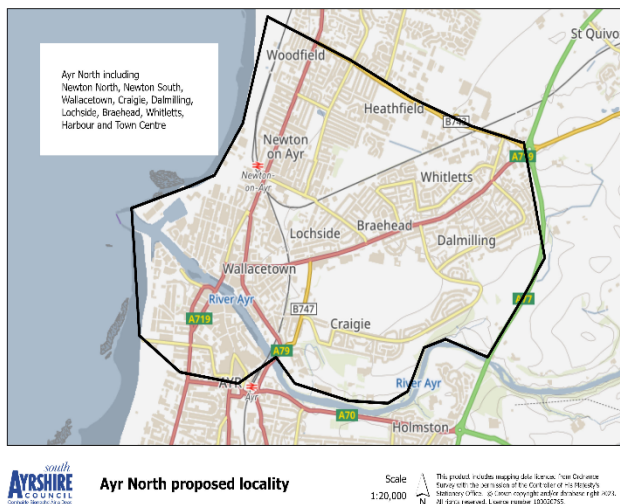
Essentially:

- Ayr North would become a much geographically smaller, concentrated locality which would contain Newton North and Newton South, Wallacetown, Craigie, Dalmilling, Lochside, Braehead, Whitletts, Harbour and Town Centre
- Ayr South would become a wider Ayr and villages locality including parts of Ayr, Alloway and Doonfoot and the villages of Mossblown, Annbank, Tarbolton, and Coylton
- A new name would likely be created for this new locality, or it could simply be Ayr South and villages

- Heathfield would become part of Prestwick locality. **Is it currently in the locality**
- All other Localities would remain the same.



The map on the left details the current operating model which encompasses both The Ayr North Locality and the supported outlying villages of Tarbolton, Mossblown, Annbank and Craigue.



The map on the left details the new proposed Ayr North Locality which comprises neighbourhoods on the Whittletts Corridor and Ayr Town.

- Lochside, Braehead & Whittletts.
- Dalmilling
- Craigue
- Ayr South Harbour and Town
- Wallacetown and Newton South

The small area that centres the neighbourhoods is the privately owned land appointed as Ayr Racecourse and Events Complex.

Please see Appendix Three and Four for more detailed information.

In response to these changes, there will be a variance to the number of residents within the affected neighbourhoods.

Boundary changes will also have implications for residents in the rural Villages of Annbank, Mossblown, Tarbolton, Craigue and Coylton which will be adopted within the new Ayr South and Villages Locality and there will be a requirement to hear their views and concerns as with all other residents.

The Table below details the current population densities by age in the current locality model and those updated figures following the proposed changes to the model.

Mid-year population estimates (2021) by area

Showing current population estimates for the Ayr North and Former Coalfield Communities and Ayr South and Coylton Localities along with proposed new locality

Current Localities	Gender	Age Group							Total
		Age 0-4	Age 5-17	Age 18-44	Age 45-64	Age 65-74	Age 75-84	Age 85+	
Ayr North and Former Coalfield Communities	Female	517	1,420	3,394	2,810	1,041	647	296	10,125
Ayr North and Former Coalfield Communities	Male	550	1,481	3,179	2,577	1,069	567	179	9,602
Ayr South and Coylton	Female	556	2,010	4,056	4,728	2,516	1,706	798	16,370
Ayr South and Coylton	Male	552	2,038	4,044	4,082	2,165	1,383	467	14,731
New Locality components	Gender	Age 0-4	Age 5-17	Age 18-44	Age 45-64	Age 65-74	Age 75-84	Age 85+	Total
Ayr North Harbour, Wallacetown and Newton South	Female	104	239	823	627	234	139	63	2,229
Ayr North Harbour, Wallacetown and Newton South	Male	111	248	810	678	278	130	29	2,284
Ayr South Harbour and Town Centre	Female	56	237	691	766	453	378	283	2,864
Ayr South Harbour and Town Centre	Male	62	255	767	647	360	274	144	2,509
Craigie	Female	46	142	438	332	143	81	25	1,207
Craigie	Male	58	163	415	322	133	58	25	1,174
Dalmilling	Female	79	263	487	394	154	100	61	1,538
Dalmilling	Male	91	288	448	296	142	73	32	1,370
Lochside, Braehead and Whittlets	Female	123	360	766	612	196	103	45	2,205
Lochside, Braehead and Whittlets	Male	142	329	692	487	208	98	37	1,993
New Locality	Gender	Age 0-4	Age 5-17	Age 18-44	Age 45-64	Age 65-74	Age 75-84	Age 85+	Total
Ayr, Craigie, Dalmilling, Lochside, Braehead, Whittlets	Female	408	1,241	3,205	2,731	1,180	801	477	10,043
Ayr, Craigie, Dalmilling, Lochside, Braehead, Whittlets	Male	464	1,283	3,132	2,430	1,121	633	267	9,330
Remainders of current localities	Gender	Age 0-4	Age 5-17	Age 18-44	Age 45-64	Age 65-74	Age 75-84	Age 85+	Total
Ayr North and Former Coalfield Communities	Female	165	416	880	845	314	224	102	2,946
Ayr North and Former Coalfield Communities	Male	148	453	814	794	308	208	56	2,781
Ayr South and Coylton	Female	500	1,773	3,365	3,962	2,063	1,328	515	13,506
Ayr South and Coylton	Male	490	1,783	3,277	3,435	1,805	1,109	323	12,222

Source: National Records of Scotland mid-year population estimates (2021)

A more detailed copy of the data is available in Appendix Five

What are we asking you?

Currently the Ayr North and Villages Locality Planning Partnership includes the neighbourhoods of: Ayr North Harbour & Newton South, Dalmilling and Craigie, Lochside Braehead and Whittlets and the Villages of Annbank, Tarbolton, Mossblown and Craigie.

Currently the Prestwick and Villages Locality Planning Partnership includes the neighbourhoods of: Prestwick, Newton South, Heathfield, Monkton and Symington.

The proposed change to the boundary of the Ayr North and Villages will displace the Heathfield neighbourhood from Prestwick and Villages to Ayr North and Villages.

The aim of this exercise is to ascertain the views of these neighbourhoods and any potential issues it may raise.

How long is this going to take?

We have planned to conduct our engagement over a six-week period effective from XXXX. We feel this will give you enough time to reply to our questionnaire - online, on paper and as well as the option to attend open sessions facilitated by members of the Locality Planning Groups, South Ayrshire Council and South Ayrshire Health & Social Care Partnership. (When available)

For a more detailed timeline, please see Appendix One

Who are we going to be engaging with? (this is currently in draft form)

We intend to be as inclusive and accessible as possible and will be working with a wide range of community organisations and groups to ensure we address the views of the wider and marginalised communities. It is anticipated that we will work with the following groups;

- Community Planning Partners
- Housing & Homeless Services
- Community Councils
- Local Churches, Faith Groups and Uniformed Organisations
- Educational Providers including Higher & Further Education
- Local Authority Partners
- Young People & Families
- Adult Services
- Community Organisations
- Health, Care & Wellbeing Providers

A comprehensive list of organisations we aim to engage with is available in Appendix Two

How are we going to do this?

In order to reach as many people as possible we need to ask for your feedback in a number of ways. We aim to be as inclusive as possible and as such we will conduct an 'Equality Impact Assessment' which is carried out to ensure we hear the voices of everyone.

We will use several different methods and tools to engage with you, these may include

Questionnaire (paper)

Telephone Discussion

Online Survey

One to One Sessions

Open Sessions

Have we thought this through?

We have been working closely with partners to ensure we are asking you the right question(s), in the right manner, with enough time, and with enough respect and anonymity for you to respond honestly and openly. We will do this by following a documented 'Engagement Plan' which will describe all steps of the process from the design of the questionnaire through to the evaluation and final communication findings back to you.

What happens after the six weeks?

We will collect all your information, which we will collate and relay it back to you in an agreed and appropriate medium. We aim to make our documentation as accessible as possible and if anyone requires information in different formats, please contact your Partnership Engagement Officer and they will be able to help.

sahscp.engagement@south-ayrshire.gov.uk



Appendix One

What do we need to do?	When does it need to be completed?
Agree question format, question and marketing	End March 2023
Design and approve questionnaire & online content	By end March 2023
Agree dates & staff for face-to-face sessions	by end April 2023
Send design to print & generate QR code	
Book venue for face-to-face sessions	
Initial promotion of consultation	
Open Consultation for six weeks	April-May 2023
Facilitate open sessions	April – May 2023
Close paper & online submissions	End May 2023
Collate paper responses	End April 2023
Collate online responses	Mid April 2023
Collate paper + online responses	End May 2023
Prepare response document	End June 2023
Approval of response document	SPAG dependant
Deliver formal feedback based on responses	As appropriate, to be agreed
Agree future actions	To be discussed

Appendix Two

Community Planning Partners

Police Scotland

Strathclyde Fire and Rescue

Housing & Homeless Services

Ayr Housing Aid Centre

SAC Housing Services and Tenant Participation

Ayrshire Housing

Seascape

Westfield Drive TRA

Newton Tenants Association

Community Councils

Ayr North Community Council

Fort Seafield & Wallacetown Community Council

Belmont, Kincaidston & St Leonards Community Council

Prestwick Community Council

Heathfield and Newton Community Council

Tarbolton Community Council

Coylton Community Council

Local Churches, Faith Groups and Uniformed Organisations

St Margarets Cathedral

Ayr Newton Wallacetown Parish Church

Dalmilling Church

Tarbolton Church

Annbank Church

St Pauls RC Church

Alloway Parish Church

Castlehill Parish Church

St Columbas Parish Church

St Andrews Parish Church

Holy Trinity Church

Auld Kirk of Ayr

Kingcase Parish Church

St Ninian's Episcopal Church

St Nicholas Parish Church

Prestwick South Parish Church

St Quivox RC Church

New Life Christian Fellowship

Tarbolton Church

St Quivox Church

Monkton & Prestwick North Parish Church

New Prestwick Baptist Church

Annbank & Mossblown Church

Educational Providers

Dalmilling Primary School

Newton Primary School

Tarbolton Primary School

Forehill Primary School

Kincaidston Primary School

Doonfoot Primary School

Southcraig School

Queen Margaret Academy

Ayr Academy

Annbank Early Years Centre

Prestwick Academy

Glenburn Primary

Heathfield Primary

Mossblown Primary

UWS

Braehead Primary School

St Johns Primary School

Annbank Primary School

Holmston Primary School

Alloway Primary School

Coylton Primary School

Kyle Academy

Belmont Academy

Wallacetown Early Years Centre

Little Acorns Early Years CIC

St Ninian's Primary

Kingcase Primary

Tarbolton Primary

Coylton Primary

Ayrshire College

Local Authority Partners

SAC Thriving Communities

SAC Sheltered Housing

SAC Youth Strategy

SAC Sensory Impairment

SAC Housing Services

SAC Corporate Parenting

SAC Young Scot

SAC Community Safety Partnership

SAC Alcohol & Drug Partnership

SAC Health & Wellbeing Team

SAC Libraries

SAC Active Schools

SAC Social Work Services

SAC Local Elected members

Young People & Families

South Ayrshire Carers Centre

Barnardos

Aberlour

Vics in the Community

Ayr Boswell 2014's Football Club

Action for Children

Ayr United Football Academy

Adult Services

Alzheimer's Scotland

Chest Heart & Stroke Scotland

Age Concern

University of 3rd Age

Opportunities in Retirement

Crossroads Care Attendance Scheme

Scottish Care

Community Organisations

North Ayr 'TheGither'	Craigie Intergenerational Gardening Group
The Ayr Ark	Broken Chains
Road to Recovery	L & M Well Being Consultancy CIC
RoomSixty	The ThreeSixty
Brush Strokes	Lochside Youth Group
Ayr North Exclusively Women's Group	Ayr North Time Team
Domain Youth Club	South Ayrshire Befriending Project
Police Scotland Youth Volunteers	Smith's Cleaning/Home Support Services
Mossblown Matters	The Iris Arts Ayr CIC
Turning Point Ayr	Ayr United Football Academy
Ayrshire Cancer Support	Riverside Community Trust
VASA	South Ayrshire Women's Aid
South Ayrshire Women's Hub	South Ayrshire Food Network
Christ in Action Foodbank	Prestwick Community
Heathfield Community Centre	65 Club Prestwick
Lochside Community Centre	Dementia Friendly Prestwick
Broken Chains	Road to Recovery
Harbour Ayrshire	RAFA Club
Whittle's Victoria FC	Glenburn Juniors FC

Health, Care & Wellbeing Providers

Ayr Hospital	Biggart Hospital
Station Road Surgery	Kirkhall Surgery
Alloway Place Surgery	Bankfield Surgery
Dalblair Rd Surgery	Cathcart Surgery

Tams Brig Surgery

Ayr North Health Centre

Community Mental Health Team

Hope Wellbeing

Wellington Wellbeing

Community Link Practitioners Network

Community Pharmacy Network

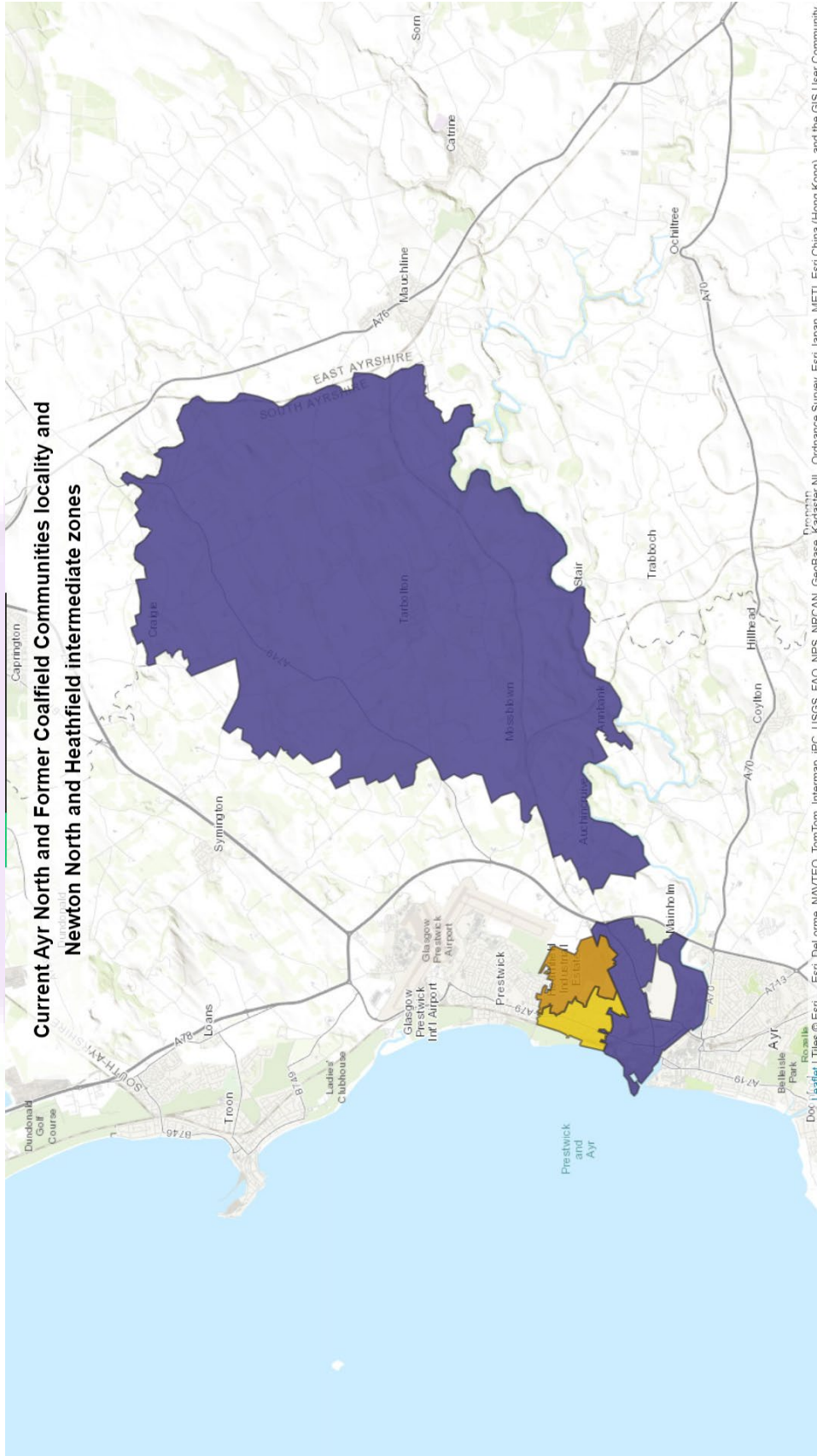
GP Cluster Managers

Community Dental Partners

Community Optometry



Appendix Three - Current Locality



Appendix Four – Proposed New Locality



Ayr North including
 Newton North, Newton South,
 Wallacetown, Craigie, Dalmilling,
 Lochside, Braehead, Whitletts,
 Harbour and Town Centre

This product includes mapping data licensed from Ordnance Survey with the permission of the Controller of His Majesty's Stationery Office. © Crown copyright and/or database right 2023. All rights reserved. Licence number 100020765.



Scale
 1:20,000

Ayr North proposed locality





Ayr North proposed locality

Scale
 1:20,000



This product includes mapping data licensed from Ordnance Survey with the permission of the Controller of His Majesty's Stationery Office. © Crown copyright and/or database right 2023. All rights reserved. Licence number 100020765.

Appendix Five

Mid-year population estimates (2021) by area																		
Showing current population estimates for the Ayr North and Former Coalfield Communities and Ayr South and Coylton Localities along with proposed new locality																		
Age Group																		
Current Localities	Gender	Age 0-4	Age 5-17	Age 18-44	Age 45-64	Age 65-74	Age 75-84	Age 85+	Total									
Ayr North and Former Coalfield Communities	Female	517	1,420	3,394	2,810	1,041	647	296	10,125									
Ayr North and Former Coalfield Communities	Male	550	1,481	3,179	2,577	1,069	567	179	9,602									
Ayr South and Coylton	Female	556	2,010	4,056	4,728	2,516	1,706	798	16,370									
Ayr South and Coylton	Male	552	2,088	4,044	4,082	2,165	1,383	467	14,731									
New Locality components																		
Ayr North Harbour, Wallacetown and Newton South	Female	104	239	823	627	234	139	63	2,229									
Ayr North Harbour, Wallacetown and Newton South	Male	111	248	810	678	278	130	29	2,284									
Ayr South Harbour and Town Centre	Female	56	237	691	766	453	378	283	2,864									
Ayr South Harbour and Town Centre	Male	62	255	767	647	360	274	144	2,509									
Craigie	Female	46	142	438	332	143	81	25	1,207									
Craigie	Male	58	163	415	322	133	58	25	1,174									
Dalmilling	Female	79	263	487	394	154	100	61	1,538									
Dalmilling	Male	91	288	448	296	142	73	32	1,370									
Lochside, Braehead and Whitletts	Female	123	360	766	612	196	103	45	2,205									
Lochside, Braehead and Whitletts	Male	142	329	692	487	208	98	37	1,993									
New Locality																		
Ayr, Craigie, Dalmilling, Lochside, Braehead, Whitl	Female	408	1,241	3,205	2,731	1,180	801	477	10,043									
Ayr, Craigie, Dalmilling, Lochside, Braehead, Whitl	Male	464	1,283	3,132	2,430	1,121	633	267	9,330									
Remainders of current localities																		
Ayr North and Former Coalfield Communities	Female	165	416	880	845	314	224	102	2,946									
Ayr North and Former Coalfield Communities	Male	148	453	814	794	308	208	56	2,781									
Ayr South and Coylton	Female	500	1,773	3,365	3,962	2,063	1,328	515	13,506									
Ayr South and Coylton	Male	490	1,783	3,277	3,435	1,805	1,109	323	12,222									

Source: National Records of Scotland mid-year population estimates (2021)

Geographical Information and Population density information contained in this report were provided by Public Health Scotland (PHS).



If you have any questions pertaining to the content of this document, please contact your respective Partnership Engagement Officer using the link below;

hscp.engagement@south-ayrshire.gov.uk

